

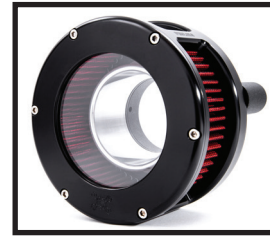
# FEULING®

## M-EIGHT AIR CLEANER KIT INSTALLATION INSTRUCTIONS

BLACK FINISH: #5433, #5434, #5533, #5534  
 POLISHED FINISH: #5435, #5436, #5535, #5536  
 CHROME FINISH: #5437, #5438, #5537, #5538

With years of experience designing improved cylinder heads, combustion chambers and intake manifolds, FEULING brings light to a new bolt-on air cleaner design for Harley-Davidson motorcycles. The Feuling BA air cleaner lengthens the intake runners and increases air velocity, delivering added volume for balanced dynamic flow.

The BA air cleaner features a highflow billet aluminum velocity stack with optimal opening diameter, outer lip and internal (ID) taper. The BA Air Cleaner includes a highflow reusable air filter and one piece billet cage. The one piece design, creates a clean look and eases installation when compared to the industry standard multi stack up construction.



Touring '17-'23 Softail '18-'23



CID	MODEL YEAR 2017:
107"	- FLHR, FLHRC, FLHX, FLHXS, FLTRX, FLTRXS, FLHTKL, FLHTK, FLHTCU, FLHTCUTG,
114"	- FLHTKSE, FLHXSE
CID	MODEL YEAR 2018:
107"	- FLHR, FLHRC, FLHRXS, FLHXS, FLTRX, FLTRXS, FLHTKL, FLHTK, FLHTCU, FLHTCUTG, FLTHKL, FLRT, FLDE, FLFB, FLHC, FLSL, FXBB, FXFB, FXLR
114"	- FLHTKSE, FLHXSE, FLFBS, FLHCS, FXFBS
CID	MODEL YEAR 2019:
107"	- FLHR, FLHRC, FLHX, FLTRX, FLHTCU, FLHTK, FLTHKL, FLDE, FLFB, FLHC, FLSB, FLSL, FXBB, FXBR, FXFB, FXLR
114"	- FLHRXS, FLHXS, FLTRXS, FLHTKL, FLHTK, FLHTCUTG, FLRT, FLFBS, FLHCS, FXFBS
117"	- FLHTKSE, FLHXSE
CID	MODEL YEAR 2020:
107"	- FLHR, FLHRC, FLHX, FLTRX, FLHT, FLHTCU, FLDE, FLFB, FLHC, FLSB, FLSL, FXBB, FXFB, FXLR
114"	- FLHRXS, FLHXS, FLTRXS, FLHTKL, FLHTK, FLHTCUTG, FLHTK, FLTHKL, FLRT, FLFBS, FLHCS, FXBRS, FXFBS, FXLRS
117"	- FLHTKSE, FLHXSE

CID	MODEL YEAR 2021:
107"	- FLHR, FLHX, FLTRX, FLHT, FLHTCU, FLHC, FLSB, FLSL
114"	- FLHRXS, FLHXS, FLTRK, FLHTK, FLHTCUTG, FLHTK, FLRT, FLFBS, FLHCS, FXBBS, FXBRS, FXFBS, FXLRS
117"	- FLTRXSE, FLHTCUTGSE, FLHTKSE, FLHXSE
CID	MODEL YEAR 2022:
107"	- FLHR, FLHX, FLTRX, FXS
114"	- FLHRXS, FLHXS, FLTRXS, FLTRK, FLHTK, FLHTCUTG, FLHTK, FLRT, FLFBS, FLHCS, FXBBS, FXFBS
117"	- FLHXSE, FLHXST, FLTRXSE, FLTRXST, FLHTCUTGSE, FLHTKSE, FXLRS, FXLRST
CID	MODEL YEAR 2023:
107"	- FLHR, FLHX, FLTRX, FXS
114"	- FLHP, FLFBS, FLFBSANV, FLHCS, FLHCSANV, FXBBS, FXFBS, FLHFB, FLHRXS, FLHTK, FLHTKSHRINE, FLHTKANV, FLHXS, FLHXSANV, FLTRK, FLTRXS, FLTRXSANV, FLHTCUTG, FLHTCUTGANV, FLRT, FLTRT
117"	- FLTRKSEANV, FXBR, FXLRS, FXLRST, FLHXST, FLTRXST

EXEMPT FROM EMISSIONS TAMPERING REGULATIONS UNDER CARB EO #D-881  
 NOTE: FEULING DOES NOT RECOMMEND TUNING BEYOND STOCK EMISSION STANDARDS

### INSTRUCTIONS

1. Use the proper tools for installation. Clean the intake with a clean rag to ensure it is free of debris. Clean breather hole surfaces.



- TOOLS:**
- 1.) Ratchet
  - 2.) 5/32" Long Ball Allen
  - 3.) 5/32" Allen Socket
  - 4.) Extension
  - 5.) 7/16" Socket



Clean throttle body & blade.



Clean breather holes & throttle body surfaces

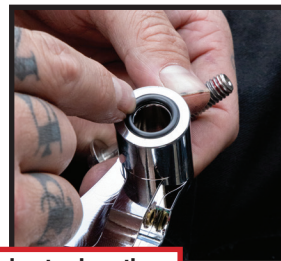
2. Lube and install inner and outer breather O-rings, use with O-ring lube.



Inner breather O-rings



Lube and install inner and outer breather O-rings, use with O-ring lube.



Install breather bolts with outer breather O-rings

**3.** If throttle body bracket is removed, use included spacers. If bracket is present (preferred), no need to use the included spacers. Install breather bolts with red loctite on threads & O-ring lube on overhead flanges. Insert velocity stack bolts to help center backing plate. Alternately tighten and torque breather bolts. Final torque to **22-24 ft/lbs.**

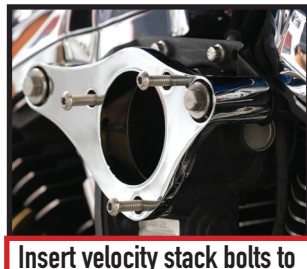


**Throttle body bracket**

Use spacers if throttle body bracket is removed.



Backing plate to throttle body gasket



Insert velocity stack bolts to help center backing plate.

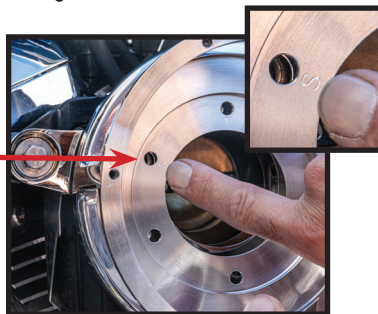


Final torque breather bolts to **22-24 ft/lbs.**

**4.** On the inside of the filter cage, see "S" for Softail & "T" for Touring models. Align this bolt hole to the top left bolt hole of backing plate, this will clock the cage and logo properly. Install velocity stack, gaskets and bolts.

**HARDWARE:**  
**Velocity stack button heads:**  
 Qty. 3, 1/4"-20 x 1.500"  
**Cover bolts (Long):**  
 Socket head cap screw  
 Qty. 3 10/32 x .750"  
**Cover bolts (Short):**  
 Socket head cap screw  
 Qty. 3, 10/32 x .250"

**CLOCK CAGE WITH TOP LEFT BOLT HOLE OF THROTTLE BODY**



**T = TOURING**

**S = SOFTAIL**



**CLOCK AIR FILTER CAGE**

**5.** Apply red loctite to the velocity stack bolt threads. Alternately tighten and torque the 1/4"-20 velocity stack bolts to a final torque of **72 in/lbs.** Lube both bases of the air filter to seal filter to cage & cover. Insert air filter into cage.

Install velocity stack, gaskets and bolts.



**Red Loctite on bolt threads.**

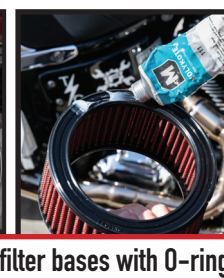
Alternately tighten & torque velocity stack bolts. Final torque to **72 in/lbs.**



**GASKET**



Lube both filter bases with O-ring lube. Install filter gasket ring and filter into cage



**6.** Apply 545 thread sealant to the 10-32 cover bolt threads. Start with the 3 longer .750" bolts, alternately tighten and torque to **20-24 in/lbs.**



Line up metal filter rib with cage post to hide rib.



Start with the 3 longer .750" bolts. Install cover with logo at the six o'clock position



Final torque cover bolts to **20-24 in/lbs. GO RIDE!**



**\* STANDARD 1 YEAR WARRANTY:**

- WARRANTY COVERS MANUFACTURE DEFECTS.
- DOES NOT COVER PARTS THAT HAVE FAILED DUE TO IMPROPER INSTALLATION, MAINTENANCE, EXCESSIVE CRANKSHAFT RUNOUT, OR MISUSE.
- DOES NOT COVER ANY CONSEQUENTIAL DAMAGE RESULTING FROM A FAILURE OF A FEULING PRODUCT.

**\* OPTIONAL 2 YEAR WARRANTY:**

- ADDITIONAL YEAR WARRANTY IS ONLY AVAILABLE IF PARTS ARE INSTALLED BY A PROFESSIONAL INSTALLER.
- THE ONLINE WARRANTY FORM MUST BE COMPLETED BY THE DEALER PRIOR TO BIKE DELIVERY.
- OIL TANK MUST BE DROPPED & CLEANED.
- CRANKSHAFT RUNOUT MUST BE BELOW 0.005"

**NOTE: FOR FULL WARRANTY INFORMATION VISIT [WWW.FEULINGPARTS.COM/WARRANTY](http://WWW.FEULINGPARTS.COM/WARRANTY)**

