

# FEULING®

## M-EIGHT AIR CLEANER EXTERNAL BREATHER INSTALLATION

**PART #5417**

Touring '17-'22 Softail '18-'22

External Breather Kit for FEULING Backing Plate, M-Eight fitment. This kit allows the Feuling air cleaner backing to be converted from standard intake breathing to external breathers. Kit includes nipple fittings, lines, breather filter, zip ties and 545 thread sealant.



CID	MODEL YEAR 2017:
107"	- FLHR, FLHRC, FLHX, FLHXS, FLTRX, FLTRXS, FLHTKL, FLHTK, FLHTCU, FLHTCUTG,
114"	- FLHTKSE, FLHXSE

CID	MODEL YEAR 2020:
107"	- FLHR, FLHRC, FLHX, FLTRX, FLHT, FLHTCU, FLDE, FLFB, FLHC, FLSE, FLSL, FXBB, FXFB, FXLR
114"	- FLHRXS, FLHXS, FLTRXS, FLHTKL, FLHTK, FLHTCUTG, FLHTK, FLTHKL, FLRT, FLFBS, FLHCS, FXBRS, FXFBS, FXLRS
117"	- FLHTKSE, FLHXSE

CID	MODEL YEAR 2018:
107"	- FLHR, FLHRC, FLHRXS, FLHXS, FLTRX, FLTRXS, FLHTKL, FLHTK, FLHTCU, FLHTCUTG, FLTHKL, FLRT, FLDE, FLFB, FLHC, FLSE, FLSL, FXBB, FXFB, FXLR
114"	- FLHTKSE, FLHXSE, FLFBS, FLHCS, FXFBS

CID	MODEL YEAR 2021:
107"	- FLHR, FLHX, FLTRX, FLHT, FLHTCU, FLHC, FLSE, FLSL
114"	- FLHRXS, FLHXS, FLTRK, FLHTK, FLHTCUTG, FLHTK, FLRT, FLFBS, FLHCS, FXBBS, FXBRS, FXFBS, FXLRS
117"	- FLTRXSE, FLHTCUTGSE, FLHTKSE, FLHXSE

CID	MODEL YEAR 2019:
107"	- FLHR, FLHRC, FLHX, FLTRX, FLHTCU, FLHTK, FLTHKL, FLDE, FLFB, FLHC, FLSE, FLSL, FXBB, FXBR, FXFB, FXLR
114"	- FLHRXS, FLHXS, FLTRXS, FLHTKL, FLHTK, FLHTCUTG, FLRT, FLFBS, FLHCS, FXFBS
117"	- FLHTKSE, FLHXSE

CID	MODEL YEAR 2022:
107"	- FLHR, FLHX, FLTRX, FXS
114"	- FLHRXS, FLHXS, FLTRXS, FLTRK, FLHTK, FLHTCUTG, FLHTK, FLRT, FLFBS, FLHCS, FXBBS, FXFBS
117"	- FLHXSE, FLHXST, FLTRXSE, FLTRXST, FLHTCUTGSE, FLHTKSE, FXLRS, FXLRST

NOTE: FEULING DOES NOT RECOMMEND TUNING BEYOND STOCK EMISSION STANDARDS

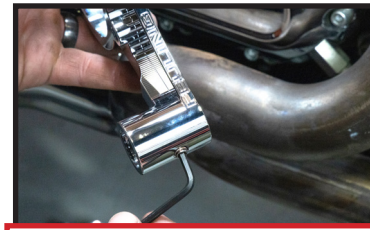
### 1. Remove manufacturer installed plugs on the underside and mounting stem of the backing plate



Remove and inspect components before installation



Remove bottom port 1/16 NPT plugs (both sides) using 5/32 allen key



Remove 1/4 - 20 outer plugs (both sides) using 1/8 allen key

### 2. Install internal plug into both sides of the mounting stem and reinstall plug



Install 8/32 x 3/16 block off set screw using 5/64 allen key (use 545 loctite)

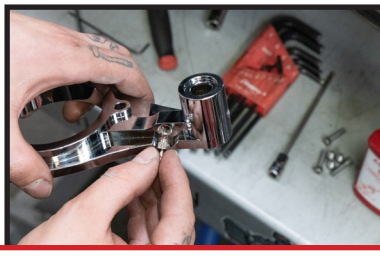


Reinstall outer plugs (use 545 loctite)

### 3. Install breather fittings into underside ports on backing plate



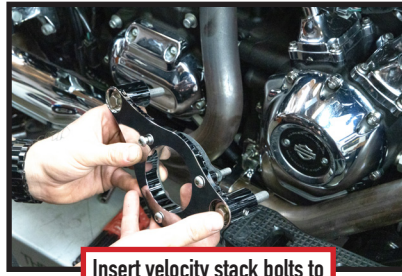
Install 1/8 NPT breather nipples (use 545 loctite)



4. Install backing plate with throttle body mating gasket, use velocity stack bolts to line up backing plate against throttle body. Tighten breather bolts.



Backing plate to throttle body gasket

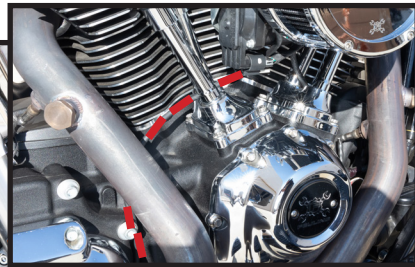
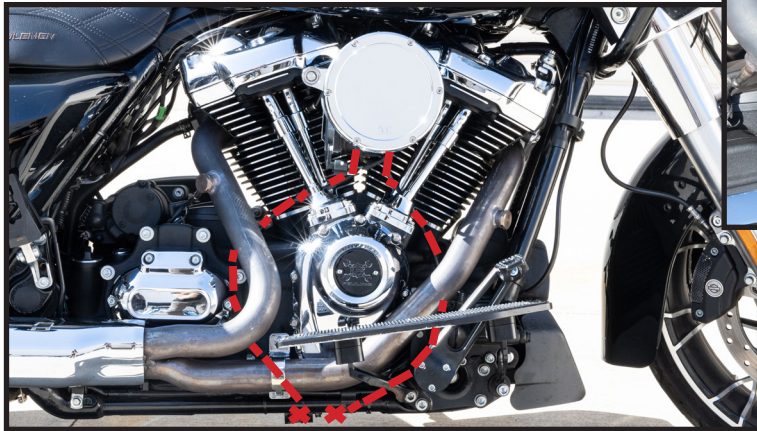
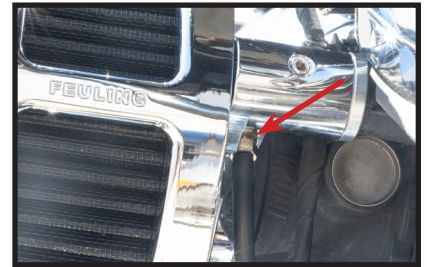
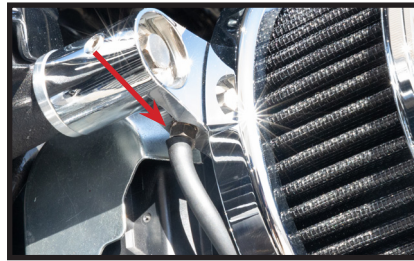


Insert velocity stack bolts to help center backing plate.

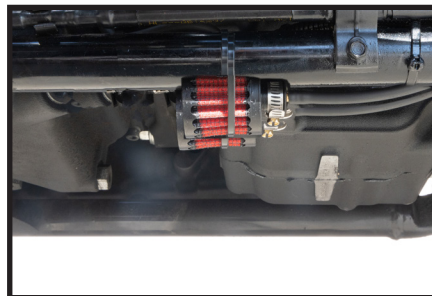
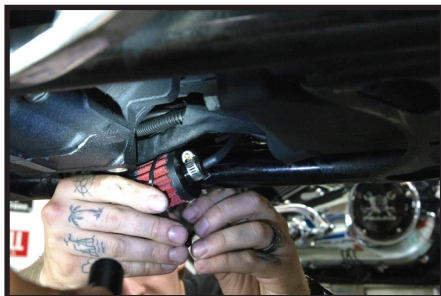


Final torque breather bolts to 22-24 ft/lbs.

5. Install breather line onto 1/8 nipped fittings. Route breather lines along path illustrated, using case bolts to secure line as it routes to the frame rails.



6. Exit filter elements and secure to the lower frame rail using zipties provided.



**\* STANDARD 1 YEAR WARRANTY:**

- WARRANTY COVERS MANUFACTURE DEFECTS.
- DOES NOT COVER PARTS THAT HAVE FAILED DUE TO IMPROPER INSTALLATION, MAINTENANCE, EXCESSIVE CRANKSHAFT RUNOUT, OR MISUSE.
- DOES NOT COVER ANY CONSEQUENTIAL DAMAGE RESULTING FROM A FAILURE OF A FEULING PRODUCT.

**\* OPTIONAL 2 YEAR WARRANTY:**

- ADDITIONAL YEAR WARRANTY IS ONLY AVAILABLE IF PARTS ARE INSTALLED BY A PROFESSIONAL INSTALLER.
- THE ONLINE WARRANTY FORM MUST BE COMPLETED BY THE DEALER PRIOR TO BIKE DELIVERY.
- OIL TANK MUST BE DROPPED & CLEANED.
- CRANKSHAFT RUNOUT MUST BE BELOW 0.005"

NOTE: FOR FULL WARRANTY INFORMATION VISIT [WWW.FEULINGPARTS.COM/WARRANTY](http://WWW.FEULINGPARTS.COM/WARRANTY)



DISCLAIMER: NOT LEGAL FOR SALE OR USE IN CALIFORNIA ON ANY POLLUTION CONTROLLED MOTOR VEHICLE.